



In This Issue:

BERARD
SINCE 1945
The Mega Transport Experts

- > Offload | Offshore Jacket Project
- > On The Road | Dredge Barge Transport
- > Spotlight On Safety | Stop Work Authority

Offload! Offshore Jacket Project



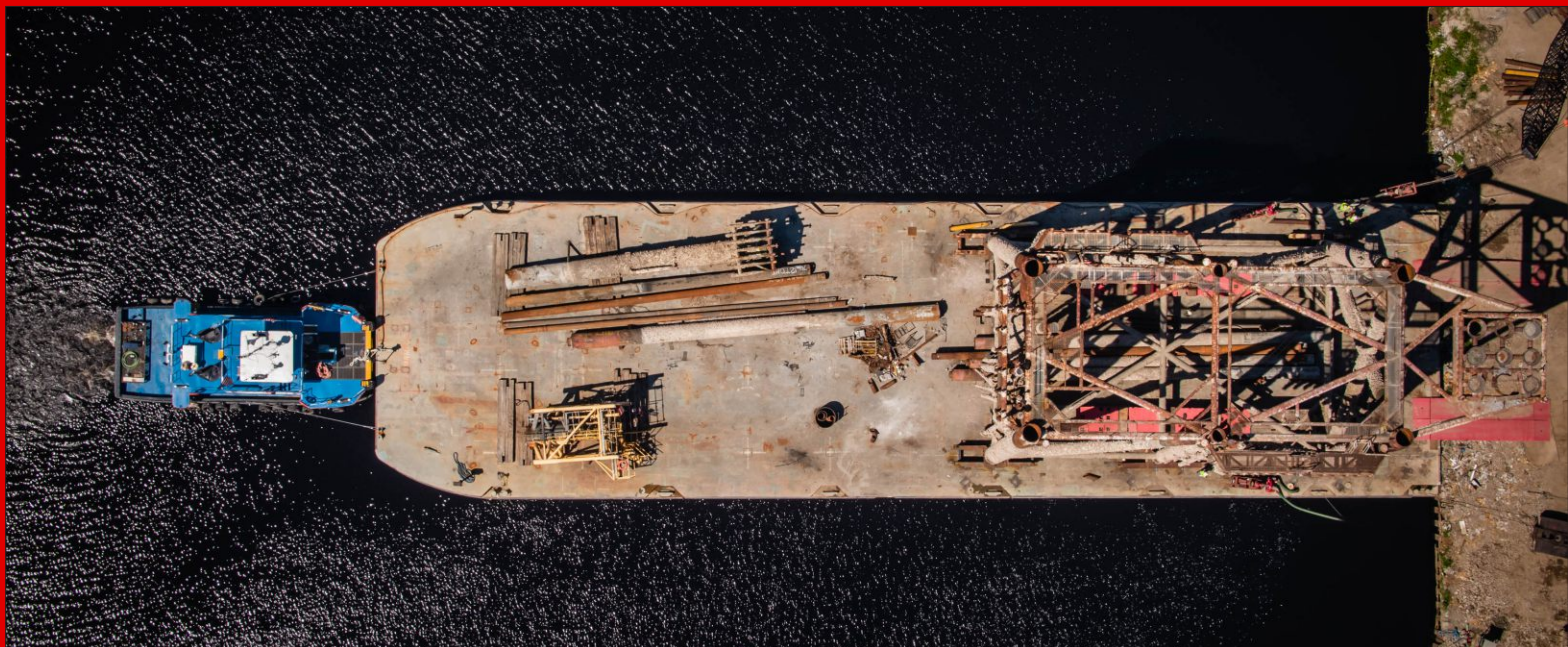
Job Specs

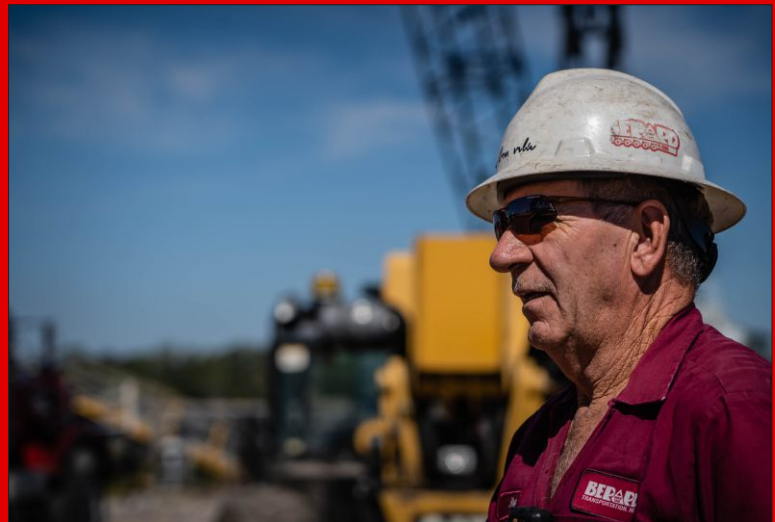
Weight:
680 Tons

Dimensions:
80'L x 50'W x 62' H

Equipment Used:
32 axle lines of SPMTs, 2
power packs, barge ramps
and winch trucks

When offshore platforms reach the end of their life span they are removed from service. Some can be refurbished and placed back in service while others are recycled. This is the case with this offshore jacket structure that was decommissioned and brought in to be recycled. The Berard team got the call to offload the massive structure. The team went to work setting the deck barge into position to begin the offload process. Utilizing 32 axle lines of self propelled modular transporters (SPMTs), the team began rolling the structure off onto the client's yard. Steel plating was used to help distribute the load on the soft South Louisiana ground. The jacket was then placed into final position so the client can begin the recycling process.





On The Road Dredge Barge Transport



Job Specs

Weight:
200,000 lbs.

Dimensions:
62'L x 24'W

Equipment Used:
12 axle Goldhofer THP/SL,
prime mover and escort
vehicles

A central Louisiana client contacted Berard to move a 24 foot wide dredge barge from a defunct quarry in northeast Louisiana to a new mining location in western Louisiana. Berard engineers determined a 12 axle Goldhofer THP trailer would suffice for the 200,000 lb. weight while providing maximum maneuverability, and surveyors studied possible routes to ensure the wide load could be transported without obstacles. After weeks of planning and permitting was completed the move was done in one day, saving the client time and cost of fully disassembling the unit.





Stop Work Authority



One of the most important things we adhere by at Berard is keeping everyone safe on the job. We do this by effectively communicating every hazard that could arise with a JSA before every job. Every team member at Berard has stop work authority at any time if they see any hazard. Stop work authority is empowering workers to halt work when a perceived unsafe condition, behavior, or hazard arises. Basically, if something on the job site becomes too unsafe or hazardous, workers have an obligation to stop work while the hazard is corrected. At Berard, safety is paramount and having our team members make it home to their families every day is what we strive for on every project. We love our team members!



> Birthdays @ Berard

Happy Birthday!

Happy Birthday to These Dedicated Team Members!

Randy Berard
Kevin Bouton
Keith Daigle
Darryl Doucet

Tina Lasseigne
Renee Legendre
Katherine Ray
Easton Berard

Jamie Houghton